



# BUILDING ENVELOPE SOLUTIONS

## CUSTOM FIT SOLUTIONS TO MEET YOUR NEEDS

LINING TECHNOLOGIES | REMEDIATION TECHNOLOGIES | DRILLING SYSTEMS | BUILDING ENVELOPE | CONTRACTING SERVICES | SUSTAINABILITY



# CETCO Building Envelope Solutions,

a wholly owned subsidiary of AMCOL® International, is an environmental construction company that offers innovative products and practical solutions for the most challenging environments. From waterproofing membranes to greenroof soil and plants, CETCO understands that our customers' needs differ. Our diverse product offering and integrated product approach is designed to accommodate the varied conditions encountered during construction, ensuring your waterproofing, roofing or greenroof system performs properly in the distinctive conditions of your project.

Whether for new construction or restoration applications, a quality process is just as important as quality products. With more than 60 years of waterproofing technology experience, CETCO is known for quality, performance and reliability.



Headquartered in Hoffman Estates, IL



*Our extensive experience allows us to develop unique solutions for your unique projects, all backed by the industry leading HydroShield™ Quality Assurance Program.*

**APPLICATIONS:**

Greenroofs

Roofing Underlayments

Remedial Waterproofing

Backfilled Concrete Walls

Plaza Decks

Blindside Waterproofing

Concrete Joint Waterstops

Precast Concrete Structures

Property Line Shoring Walls

Shotcrete Foundation Walls

Split-Slab Construction

Underslab

Cut and Cover Tunnels

Bored Rock Tunnels



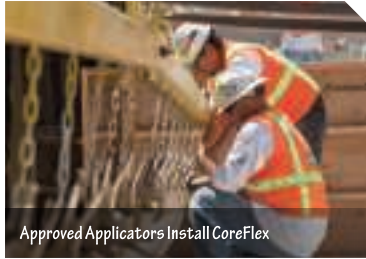
“ CETCO is an exceptional company to work with – the products are of high quality and perform extremely well in some of the toughest applications to be found. This, along with the support of people who care about doing the job right the first time, is why we like to work with CETCO. ”

- David Neal  
Chamberlin Roofing & Waterproofing  
Dallas TX

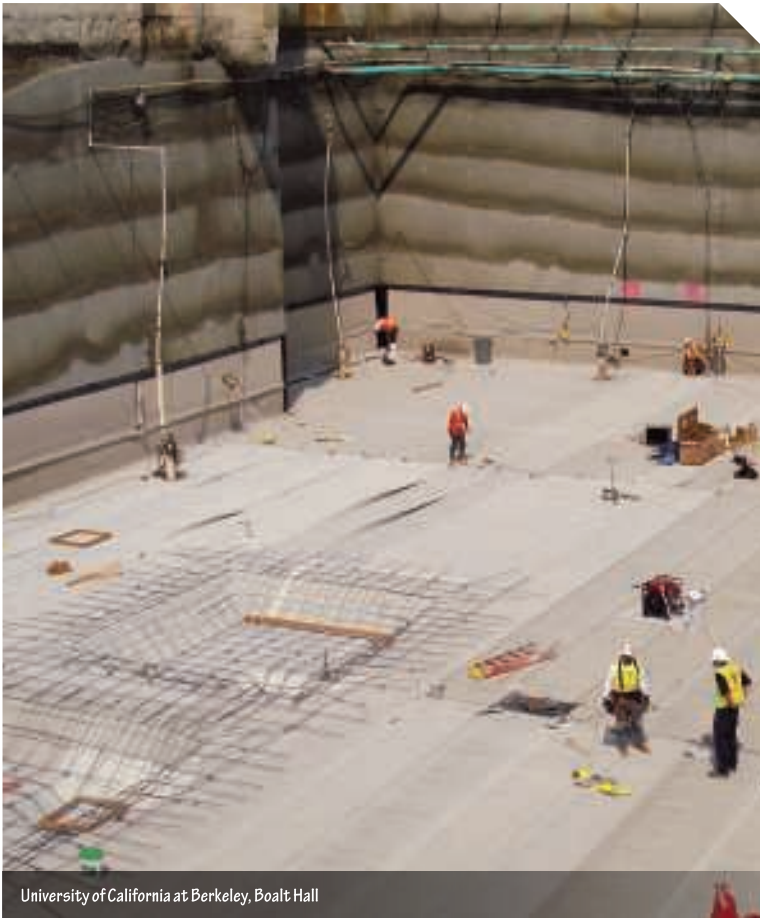




Installed TB-Boot Tie Back Covers



Approved Applicators Install CoreFlex

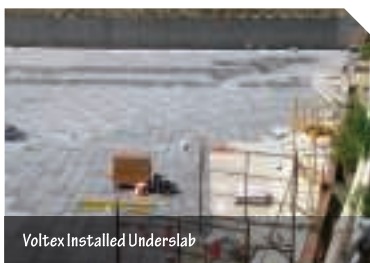


University of California at Berkeley, Boalt Hall

# Below-grade Waterproofing

## *Leading Waterproofing Technology*

CETCO offers a comprehensive line of foundation waterproofing products and accessories. Designed to work together and backed by the HydroShield Quality Assurance Program, our products and integrated product approach ensure that your waterproofing system protects your structure from water ingress. Our experienced sales team, technical experts and design team are here to help guide you to the best product or system for your project.



We are committed to providing our customers with the best waterproofing technology. As a leading provider of waterproofing solutions, our on-site R&D team is continually working to shape the future of construction waterproofing.

### ADVANTAGES

- ▶ Proven Waterproofing Technology
- ▶ Integrated Product Systems for Single Source Warranty
- ▶ Durable Product Construction Resists Contaminants and Withstands Conditions
- ▶ Technical Expertise
- ▶ HydroShield Quality Assurance Program



Designed to protect your building through pre-installation planning, approved applicators and third-party inspections

“ As a construction company, we rely on a product manufacturer to provide quality products and services. CETCO continues to go above and beyond our expectations. CETCO maintains a professional approach when working through difficult situations, and work closely with all parties involved to make sure the job gets done right the first time. I look forward to working with CETCO on upcoming projects. ”

- Jamie Hendricks  
Power Construction, LLC  
Chicago, IL



Strataseal HR Hot Rubber Installation



Piper Tech Heli-pad Restoration



Wake Forest Baptist Health Plaza Deck Restoration

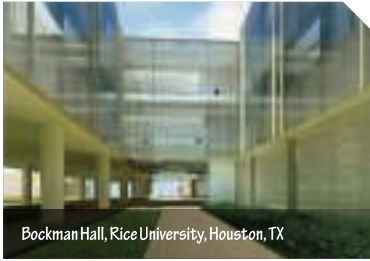
# Plaza Deck Waterproofing and Restoration

Whether for new construction or restoration applications, CETCO has a waterproofing product to fit your requirements. We utilize the proven technology of CoreFlex Thermoplastic Membrane to overcome many of the challenges posed by traditional plaza deck restoration. CETCO provides faster installation, and a sustainable solution to plaza deck restoration.

## ADVANTAGES

- ▶ Waterproofing Protection with Proven Dual-Membrane Technology
- ▶ Minimal Demolition Required Reducing Hazardous Airborne Particles
- ▶ Diminishes Costs Associated with Surface Prep and Demolition
- ▶ Faster Dry-In Time Than Other Systems Allows for Quicker Project Turnaround
- ▶ Dramatically Reduced Exposure of Finished Space Protecting the Structure from Weather Related Damage
- ▶ No Kettles, Solvents, Fumes or Open Flames Necessary





# Greenroofs: Single Source Greenroof Solutions

GreenScapes Greenroof Solutions offers customers the freedom to build a greenroof that best fits your needs and wants. Providing all components from the waterproofing to the plants, CETCO is truly a single-source provider of state-of-the-art greenroof solutions. Our greenroof professionals will help you design the greenroof that meet all your requirements.

## ADVANTAGES

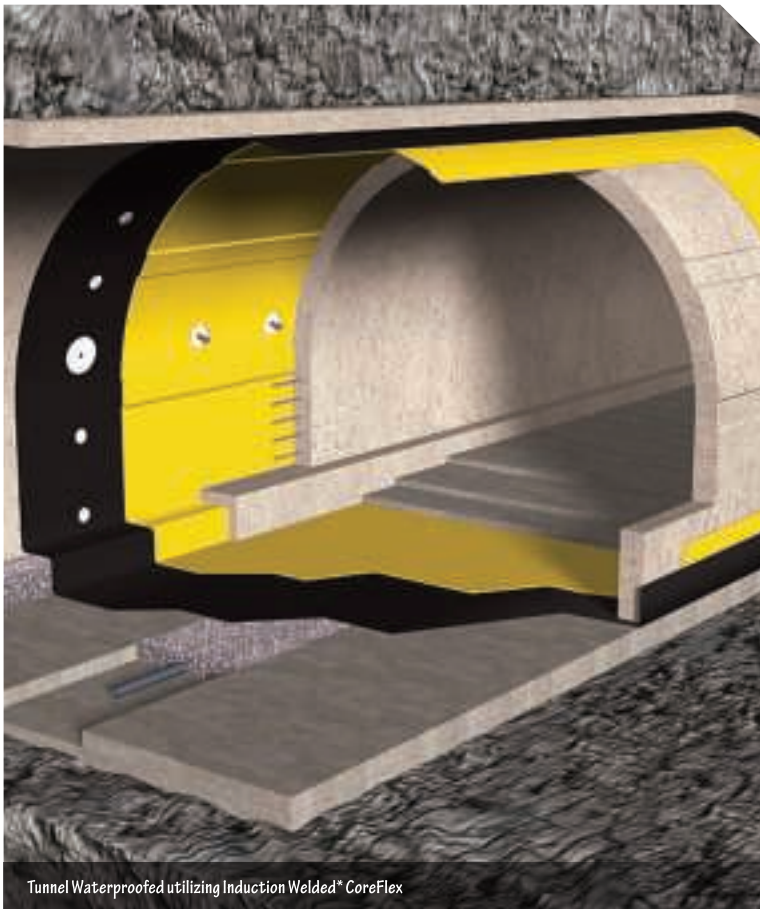
- ▶ Waterproofing Membrane Protection
- ▶ Stormwater Retention and Management
- ▶ Reduced Energy Consumption
- ▶ Reduced Urban Heat Island Effect
- ▶ Improved Air Quality
- ▶ Improved Sound Insulation
- ▶ Aesthetics and Additional Recreational Space
- ▶ Natural Habitat for Animals and Plants



Completed Tunnel Illustrating CoreFlex Membrane



Completed Tunnel



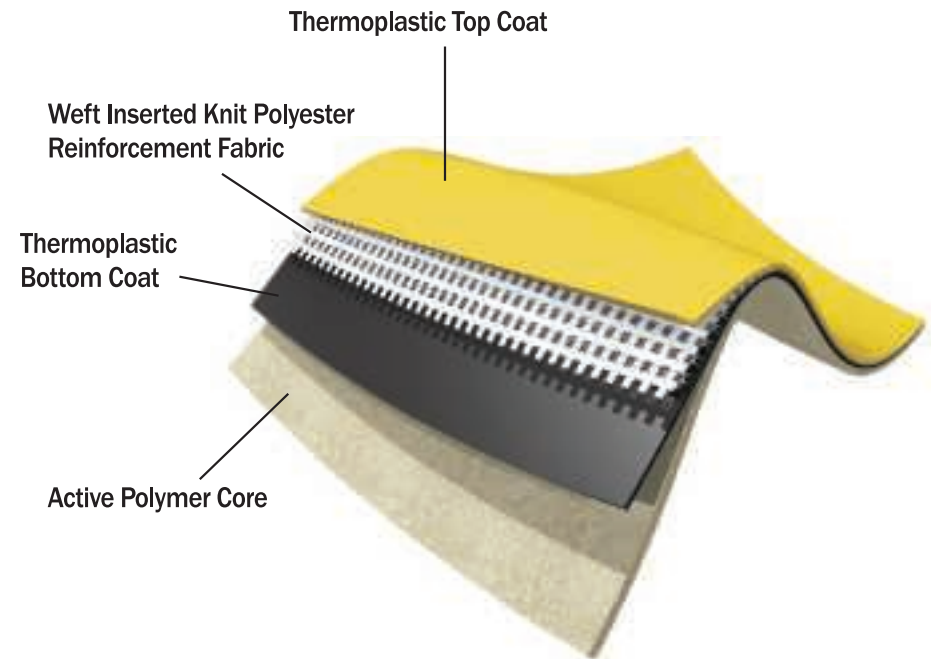
Tunnel Waterproofed utilizing Induction Welded\* CoreFlex

\* Patent Pending

# Tunnel Waterproofing

## Leading Waterproofing Technology

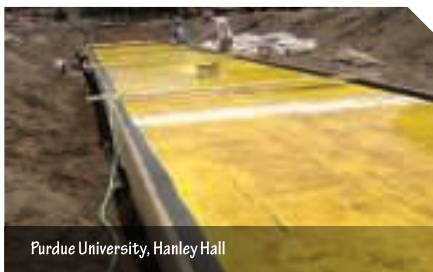
CETCO Building Envelope Solutions offers superior and unrivalled solutions to the challenges of tunnel waterproofing. With capabilities ranging from cut-and-cover to bored rock construction, our commitment to innovative product design and superior technology allows us to offer a wide range of waterproofing products to keep your tunnels dry.







CoreFlex applied by Induction Welding\*



Purdue University, Hanley Hall



Cut and Cover Tunnel, Oklahoma City, OK

## ADVANTAGES

- ▶ Dual Membrane Provides Built in Redundancy
- ▶ Durable Product Construction Resists Contaminants and Withstands Conditions
- ▶ Integrated Lateral Migration Inhibitor
- ▶ Innovative Installation Methods
- ▶ Safe, Easy Installation
- ▶ Easy Tie-In of Cut and Cover to Bored Rock Tunnels



Designed to protect your building through pre-installation planning, approved applicators and third-party inspections

“ If I have a challenging waterproofing job I turn to CETCO for direction. I know I will receive the support necessary to design a water tight structure. I especially appreciate the CAD details they provide when I specify the Hydroshield Warranty. Good communications are imperative for a successful job and the CETCO CAD details provide the clarity needed between designer and contractor. I think CETCO’s caption says it best “If it’s worth building, its’ worth protecting”! ”

- Lynn Paul  
SSE Engineering Inc.  
St. Louis MO



University of California at Berkeley Helios Energy Research Facility

# HydroShield™: Providing Peace of Mind

*The industry's most comprehensive  
quality assurance program.*

With more than 60 years of waterproofing experience, CETCO has garnered worldwide recognition for quality, performance and reliability. The HydroShield Quality Assurance Program provides our customers with the peace of mind to know that your waterproofing system is installed according to specification by CETCO approved and trained applicators.

- ▶ Design Assistance
- ▶ Approved Applicator Program
- ▶ Independent Inspection
- ▶ Proven Performance
- ▶ No Dollar Limit Warranty Coverage



Strongseal® diverts 600 tires per truckload of material from landfills



CETCO process eliminates 5000 truckloads of waste transportation, Dublin Ireland



MSE Vegetated Walls, designed with on-site soils, Philadelphia PA

# Sustainability: Commitment to our Future

From our land management practices to the design of our corporate headquarters, sustainability is part of our identity. These are just a few of the ways we focus on sustainability:

- ▶ Silver LEED™ Certified Headquarters
- ▶ Reclamation of Land
- ▶ Products Made from Recycled Materials
- ▶ Carbon Footprint Reduction in Landfills
- ▶ Installation Processes Designed to Reduce Cost and Waste
- ▶ Materials Designed to Prolong the Life-Cycle of a Structure
- ▶ Products Provide Barrier Layer from Contaminants
- ▶ Geothermal Grouts to Support our Clients' Sustainability Efforts





## ABOUT AMCOL® INTERNATIONAL CORPORATION



[www.AMCOL.com](http://www.AMCOL.com)



[www.CETCO.com](http://www.CETCO.com)

CETCO, a wholly owned subsidiary of  
AMCOL International Corporation

Headquartered in Hoffman Estates, Ill., AMCOL operates over 68 facilities in Asia, Australia, Europe, North America and South America. The Company employs approximately 2,400 employees in 26 countries. The Company, established in 1927, currently trades on the New York Stock Exchange under the symbol "ACO". AMCOL International produces and markets a wide range of specialty mineral products used for industrial, environmental and consumer-related applications. With more than 68 world-wide locations, AMCOL manages a global supply chain to deliver world-class quality. Our full range of products and services allow us to bring value to our customers, but ultimately, we believe our commitment to understanding customers' needs is what sets us apart in our industry.

JUNE 2011 (Supersedes All Previous Versions)

The information contained herein supersedes all previous versions, and is believed to be accurate and reliable. CETCO makes no warranty of any kind and accepts no responsibility for the results obtained through application of this information.  
© 2011 CETCO Printed in the U.S.A.

